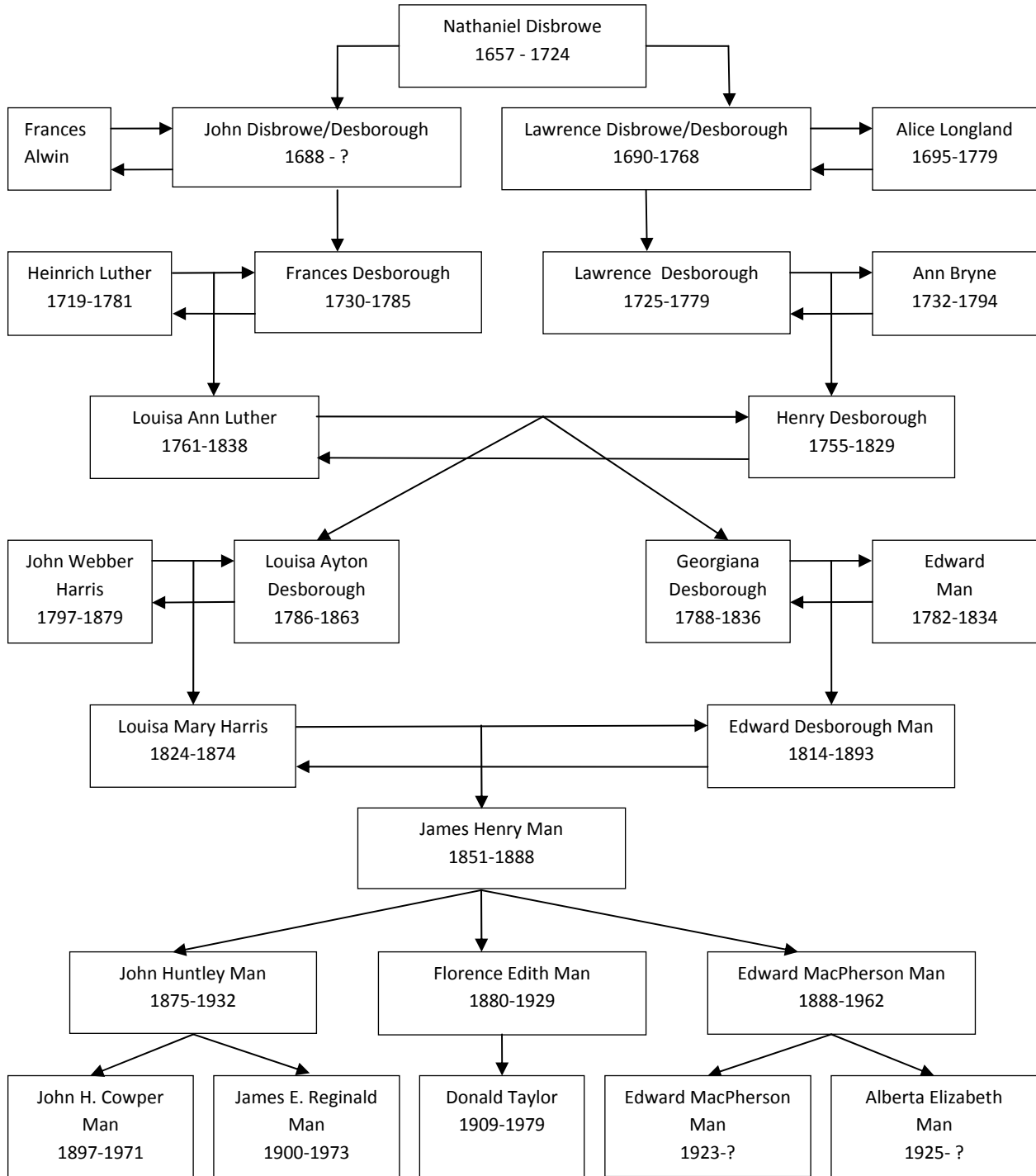


The relationship between the Man and Desborough families.



Downward pointing single arrow is a child. Horizontal double line is a marriage. The chart shows the relationship between the Man and Desborough families only down to the 8<sup>th</sup> Man generation from Nathaniel Desborough (1657 – 1724) and no farther. There are living descendants from all members of this 8<sup>th</sup> Man generation, including a marriage of one member (Timothy Taylor) into the British royal family (Lady Helen Windsor). None of the spouses of the Man generations are shown for lack of space.